

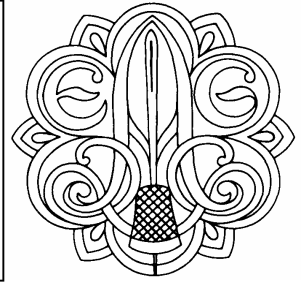


Needle Arts Guild of Toledo

Newsletter

Volume 9 Issue 2

March/April 2008



From The President's Desk

As I sit here at the computer waiting for the temperature to drop and more ice on the way I can only think that this has to be one of the strangest winters on record. Let's keep our fingers crossed that spring is on the way!

EGA is inviting chapters to teach embroidery to children. We will be participating through a summer public art program sponsored by TBG. We will be teaching children a plastic canvas fish that they can turn into a bookmark or wear as a pendant. Classes will be held at TBG on Tuesday, June 24th from 9:30 to 11:30 a.m. and on Tuesday, July 15th from 1:00 to 3:00 p.m. Anna Kerlin is heading up this project and will have more information at our next few meetings. We'd like to have a few people try the project before we teach it.

Michigan State Day 2008 will be Saturday, July 19th. The projects look very interesting and information is available on line at threadking@aol.com. Eileen Bennett, Rozelle Hirschfeld, Kathy Fenchel and Sharon Schlemmer are teaching.

How about bringing a friend to our next meeting? I'm sure we all know someone who loves to stitch as much as we do. It's great seeing new faces.

Golden Thread Award nominations are due to EGA by May 1st. Take some time to nominate someone from the guild who has made an impact by sharing time or talent. Feel free to contact any of the board members to make the nomination.

So for now, stay warm, stay dry and see you at the meeting.

Maria

Needlework Display

We are very pleased that the Sanger Branch of the Toledo Lucas County Library will not only be the site for our show again this year, but they are going to let us have a display case for our needlework during the month of July. This will be great a great opportunity to also advertise for the show. Diane Myers is coordinating the display, please see her for more information.

Announcements and Snippets

Board Meetings

This year the board meetings will be held at the home of Maria Nowicki at 6:45 p.m. on the first Thursday of the month. The address and directions have been emailed to the board members. If you didn't receive directions and want to attend a meeting, please contact Maria.

Stitch-In

Stitch-In meetings are held every Thursday from 11am–5pm. The third Thursday of the month we are at Something Extra. Other Thursdays we meet at a member's home.

The third Tuesday of each month we have a group for canvas projects. We get started around 6:30 PM and end around 9:30 PM. Sometimes we pick a project for the group but you can always work on any project you have.

On the fourth Tuesday, the crewel group has a stitch-in from 6:30pm – 9:30pm.

Locations change weekly. Call Katherine Thompson at 419-385-0081 or e-mail Diane Myers at jrmyers@roadrunner.com for the next meeting place.

New Members

There has been a lot of activity lately through our website from people who are interested in joining our guild. We also get a lot of new members after our show. So if you see an unfamiliar face, please introduce yourself and make the new person welcome. And if you've just joined us: Welcome! We're glad you're here!

Secret Stitchers

You never cease to surprise me. You never seem to miss a heart beat with a card, gift, candy and a constant flow of surprise stitching! Thank you, thank you, thank you. -- Marilyn Freeman

Hints & Tips

If you are having trouble threading a needle, try turning the needle over. Sometimes one side is smoother than the other because of the way it is stamped out. -- Sue Wiemer

Program Schedule

"Hearts" EGA National Outreach Program 2006

The EGA Heart booklet has arrived! The challenge is to make this design into your own piece or pieces. You can experiment with colors, fibers and even a different design if you do not want to do any more hearts. Our goal is to have a display of these pieces, either finished or unfinished, at the Annual Show.

Stitch of the Month Club: Each month in 2008, there will be a mini-lesson on a different stitch. The goal of this program is to (re)introduce a basic stitch, demonstrate variations on the stitch, and in some cases, the progression of the stitch. The monthly schedule appears below. Hopefully at the end of the year, you can assemble your examples into a book. Caren Scarbrough is willing to give a demonstration on making a "Cloth Book".

This series of mini-lessons will be a perfect opportunity to use up some of your stash, so please bring some appropriate fabric and threads to each meeting. If you would like to share your stash with your stitching neighbor, please do so! If you would like to volunteer to teach a stitch, or if you would like to learn more about a particular stitch, please see Irene Leonard.

March 12: Stitch of the Month - Fly Stitch and several variations; Project - EGA Heart #1, special focus on the Bargello pattern, needle blending and laying tools; Village Green - a work in progress for those of us who need help; *Get It Finished* entries

April 9: Stitch of the Month - Rhodes Stitch and variations; Project - EGA Heart #3, special focus on Pulled Thread; Village Green - continuing work in progress for those who need help

May 14: Stitch of the Month - to be determined;

June 11: Annual Pot Luck Party, *Get It Finished* entries, and Secret Stitchers revealed

July 9: Stitch of the Month - to be determined;

August 13: Stitch of the Month - to be determined;

September 10: Stitch of the Month - to be determined;

October 8: Stitch of the Month - to be determined;

November 12: Stitch of the Month - to be determined;

December 10: Annual Christmas Party and Ornament Exchange. Also *Get It Finished* entries, Cookie Exchange, prizes for *Get It Finished* and volunteer drawings, New Officer Installation.

Refreshments

Each month, various members have signed up to bring refreshments for the group. Volunteers for March are Peverley Hormann and Ann Rorarius, for April they are Irene Leonard and Julia Stange. Please consider volunteering for future months, a sign up sheet is available at the meetings.

Calendar of Events

Dates	Event Information
03/06/08	NAGT Board Meeting
03/12/08	NAGT Monthly Meeting (<i>Get It Finished</i> Entries)
04/03/08	NAGT Board Meeting
04/09/08	NAGT Monthly Meeting
04/20/08 — 04/24/08	<i>Threads of Friendship</i> , GLR seminar, hosted by the Madison Area Chapter, Madison WI
05/01/08	NAGT Board Meeting
05/14/08	NAGT Monthly Meeting
06/05/08	NAGT Board Meeting
06/11/08	NAGT Monthly Meeting (Annual Potluck, <i>Get It Finished</i> Entries)
06/28/08 — 06/29/08	<i>Crosby Festival of the Arts</i> , sponsored by TBG
07/03/08	NAGT Board Meeting
07/09/08	NAGT Monthly Meeting
08/07/08	NAGT Board Meeting
08/13/08	NAGT Monthly Meeting
08/31/08 — 09/05/08	<i>National Seminar</i> , hosted by EGA, Louisville, KY
09/04/08	NAGT Board Meeting
09/10/08	NAGT Monthly Meeting (<i>Get It Finished</i> Entries)
10/02/08	NAGT Board Meeting
10/08/08	NAGT Monthly Meeting
11/06/08	NAGT Board Meeting
11/12/08	NAGT Monthly Meeting
12/04/08	NAGT Board Meeting
12/10/08	NAGT Monthly Meeting (Annual Christmas Party & Ornament Exchange; <i>Get It Finished</i> Entries)

Get It Finished!

Don't forget to bring in your projects to the March meeting.

Announcements and Snippets

Group Correspondence Course

This is a new GCC being offered called *Moonlight Sonata* by Cindy Valentine. We currently have a total of 10 people signed up for this project (including me as the course coordinator) and there are spots for 11 more if you are also interested. Your last chance to sign up for this project will be at the March meeting. The course fee will be split among all of the participants, so as of this writing, the amount for each person is \$15 for the course plus \$40 for the book. If no one else signs up and we can collect the money at the March meeting, then I will send the forms in and we will have the first project meeting in May. We will also have a quick, informal meeting in April just to discuss how often you'd like to meet and if you'd rather meet after our regular NAGT meetings or have project meetings at someone's house.

Su Pellitieri

Here are the project details from EGA:

An intermediate course in Hardanger embroidery, this piece focuses on some of the ways traditional Hardanger embroidery stitches can be embellished using other pulled stitches, surface stitches, specialty threads, and beads. There is a chart to help the student select an alternate colorway if desired. Several filling stitches will be learned while stitching this sampler, including small webbed spokes, adjoining wrapped bars, curled V, struvor, and large, wheeled spokes. In addition, there are double cables, a four-sided stitch, faggot stitch, Algerian eyelets and other eyelet stitches. These stitches are combined with traditional Hardanger motifs, satin stitches, and klostors to make a piece suitable for framing. Because some of these stitches require compensation or complex pathways, information is given to help the student plot a path for irregular areas of needleweaving or wrapping. Information is provided about how to repair common cutting errors.

Project: Framed piece

Size: Stitched area is 7.43" x 15.29" on 28-ct linen

Fabric: 28-ct linen

Threads: A variety of cottons, silks, and metallics

Colors: Periwinkle blues and white; chart included to aid in selecting alternate colorways

Skill level: Intermediate

Prerequisites: Ability to read a chart and some Hardanger experience

Time: Six months

Fee: \$150 per group

Text: \$40.00 per student; more than 70 pages, extensive color graphics including photos showing each step for completing complex stitches and pathways

Supplies: (Approximate) \$50.00

There is also a more detailed picture on pg. 49 of the December 2007 *Needlearts* magazine.



Moonlight Sonata (picture downloaded from EGA website)

Through The Needle's Eye

Enter your needlework in EGA's 19th National Exhibit, *Through the Needle's Eye!* Entries must be postmarked by March 23, and received by April 1, 2008. Entries will be juried by three judges. Entries must be submitted by digital image on CD-ROM, saved in JPEG format at full quality.

Through the Needle's Eye opens August 25 in Louisville, and will travel across the country for two years. For more details visit www.egausa.org, or contact Peg Dunayer, registrar at pdquilt92@aol.com.

Sincerely!

Anita Streeter

Executive Director

The Embroiderers' Guild of America

A copy of the registration form will be available at our March meeting.

Announcements and Snippets

Membership Renewal

I have just received the first quarter renewal list from EGA headquarters. The renewal rate reflects the increase in the national dues: \$43.00. Of that \$43.00, \$32.00 goes to EGA, \$1.00 to Great Lakes Region and the remaining \$10.00 stays with us. You can pay me at the meeting or send a check to:

Diane Myers
22045 W. River Road
Grand Rapids, Ohio 43522

Renewing members are: Chris Christiansen, Ann Rorarius, Vada Scribner, Katherine Thompson, Jo Wagoner, Darlene Waugh, Carol Ann Woidke, and Helen Zeller.

Please note that Su's database lists renewing members as Kim Carles-Hammer, Chris Christiansen, Ann Rorarius, Vada Scribner, Katherine Thompson, Darlene Waugh, Carol Ann Woidke and Helen Zeller. These two lists aren't the same so would Kim Carles-Hammer and Jo Wagoner please confirm their membership status with Diane?

Michigan State Day

The Mill Race Chapter EGA is excited to announce that they are hosting Michigan State Day on July 19, 2008 from 9:00 am to 3:30 pm (registration starts at 8 am). They have reserved space at St. John's Golf & Conference Center in Plymouth, Michigan. They have four interesting and fun classes to offer, plus a tea cup auction and vendors with which to shop. The classes are: "The Apple of My Eye" by Kathy Fenchel (needlepoint and stumpwork), "Catherine's Pyn-Pillow and Scissor Minder" by Eileen J. Bennett (blackwork), "Michigan Cherries" by Rozelle Hirschfelt (pulled thread), and "Golden Pear Sewing Case" by Sharon Schlemmer (embroidery on felted wool). The \$85 fee includes a Continental breakfast and lunch. Questions can be directed to the registrars Connie Carter at 248-347-9557 (or mcarter@twmi.rr.com) or to Jennifer King at threadking@aol.com. Registration opens March 1st and ends May 31st, 2008.

A full color copy of the brochure will be available at our March, April and May meetings for anyone who is interested in attending. The needlework techniques for each project are listed in parenthesis in the descriptions above.

Ohio State Day

The Columbus Area Chapter of the EGA invites us to join them for Ohio State Day on July 12, 2008 from 9:00 am to 3:00 pm (registration starts at 8 am). They will be holding State Day at their regular meeting place, the Dublin Community Church, at 61 Bridge Street, Dublin, Ohio. The project is "Friends in Stitches" by Ellen Chester of *With My Needle*, located in Cincinnati, Ohio. Ellen is also bring a trunk show with her, so be prepared to shop.

"Friends in Stitches" is a sewing case that celebrates the bonds created among stitching friends. The front of the case features two girls holding a piece of embroidery between them. Also on the front of the case are cardinals and violets. You can personalize the case front with your own initials.

On the back of the sewing case is a small sample with the lovely old verse, *My needle does my heart engage*. There is room to further personalize your case.

The inside of the case has an embroidered pinkeep on one side and a pocket for storing your needlework treasures on the other side.

In addition to the sewing case, there is a needlebook resembling a sampler with dividing bands worked in different sampler stitches.

The class and kit fee is \$65, lunch is \$10 and there are also special items (a scrimshaw ruler, a scrimshaw thread winder and a sterling silver cardinal charm) that can be ordered for the project.

Class is limited to the first 70 registrants. Registrations must be postmarked no later than April 25, 2008. No late entrants will be accepted. For more information, contact the registrar Diane Jackson, embrodr@insight.rr.com.

A full color copy of the brochure will be available at our March and April meetings for anyone who is interested in attending.

Annual Show

Peverly is still finalizing the dates of our show with the Sanger Library. The tentative dates are drop-off on Thursday, Sept. 11th, judging on Friday, Sept. 12th (remember due to time constraints we voted that we will no longer be offering critiques) and the show will be on display Saturday and Sunday, Sept. 13-14th. Pencil the dates in your calendar but don't ink it in until we get confirmation from Peverley. We also need someone to host the judge, Carol Lynn Stratton and her companion. Carol was our judge in 2006 and has pet and food allergies.

The NAGT Newsletter is published six times per year (January, March, May, July, September, and November) by the Needle Arts Guild of Toledo (NAGT) chapter, The Embroiderers' Guild of America, Inc. The Editor welcomes comments, input, and story items. Please send them to the editor by the 25th of the month preceding publication.

Editor: Susan Pellitieri; 703 Butterfield Dr; Toledo, Ohio 43615, Phone: 419-382-1329, E-mail: pellitieri@aol.com

EGA chapter newsletters may copy material contained in this publication except items which are noted and marked as copyrighted. Please credit this Chapter when due.

MEMBERSHIP in the Needle Arts Guild of Toledo is open to all embroiderers. New and renewing dues payments should be sent to: Nancy Wright, 17515 Sycamore Rd., Grand Rapids, OH 43522.

ANNUAL DUES - NAGT annual dues of \$43 includes:

Dues - Local chapter

- Bimonthly NAGT chapter newsletter
- Chapter meetings and programs
- Local chapter lending library
- Group correspondence course (additional fee required)

Dues - Great Lakes Region (GLR)

- GLR seminar (additional fee required)

Dues - The Embroiderers' Guild of America, Inc. (EGA)

- Subscription to quarterly magazine, Needle Arts
- Individual correspondence courses for a fee
- National seminars for a fee

Members can attend optional local Chapter workshops presented by teachers contracted by the Chapter and paid for by workshop participants.

MEETINGS are the second Wednesday of every month starting at 6:30 p.m. in the Toledo Botanical Gardens Conference Center.

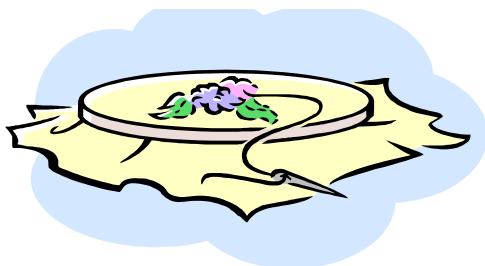
GUESTS are welcome at all meetings and may attend two meetings before being asked to join.

NAME TAGS must be worn at all meetings or pay a 25¢ fine. The fines collected go to general funds to help cover expenses.

MEETING CANCELLATION: Monthly meetings are cancelled due to bad weather if the Toledo Public schools are closed. Tune into AM 1370 News radio in Toledo for school closings.

Great Lakes Region R.O.S.E. State Day

R.O.S.E. State Day will be held October 10th and 11th, 2008 at Central United Methodist Church in Richmond, Indiana. The theme will be Tying Friends Together and the contact person is Joyce Anne Baldwin (joyceanneb@insightbb.com). Further details will be listed as they are provided.



NAGT Officers and Board Members

President

Maria Nowicki
419-824-9631
nohiorn@aol.com

Newsletter

Susan Pellitieri
419-382-1329
pellitieri@aol.com

President Elect

Caren Scarbrough
419-278-2162
caren@dtnspeed.net

2008 Show Chairman

Peverley Hormann
419-841-3712
pevhormann@yahoo.com

Secretary

Annette Hill
419-885-6365
nettie@buckeye-express.com

Outreach Chairman

Beth Thompson
814-734-0609
BethThompson790@aol.com

Treasurer

Nancy Wright
419-832-3801
nlwright42@verizon.net

Library

Katherine Thompson
419-470-7935
kmthompson49@yahoo.com

Membership

Diane Myers
419-832-9571
jrmyers@roadrunner.com

Program

Irene Leonard
734-856-1873
irnlrd@aol.com

TBG Representative

Anna Kerlin
419-829-6752
akerlin@buckeye-express.com
ackcatlady@buckeyeaccess.com

Welcoming Committee

Marilyn Freeman
419-381-8782
mjfree1971@aol.com

Education

Cathy Studer
567-214-1139
treesong44@yahoo.com

GLR Representative

Caren Scarbrough
419-278-2162
caren@dtnspeed.net

indicates Voting Members

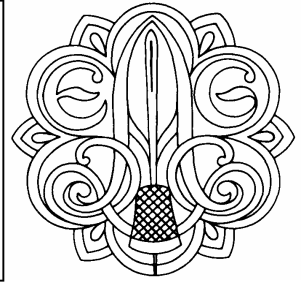
Did you know that EGA is a 501c(3) organization and that donation to the organization are tax deductible? Donations can also be made to your local group. The first page of the *Needlearts* magazine has more information on contributions to the EGA Annual Fund.

Visit NAGT online at
<http://members.aol.com/NeedleArtsToledo>

For the Newsletter, visit
[http://members.aol.com/
NeedleArtsToledo/private/news.htm](http://members.aol.com/NeedleArtsToledo/private/news.htm)



Needle Arts Guild of Toledo
Newsletter
 Volume 9 Issue 2
 March/April 2008

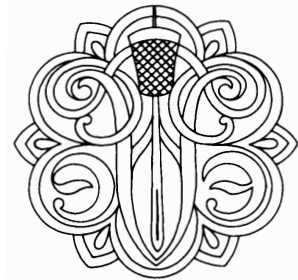


The Embroiderers' Guild of America, Inc. is a nonprofit educational organization founded in 1959 to...

- Foster high standards of design, color, and workmanship in embroidery;
- Teach the embroidery arts; and
- Preserve our national needle arts heritage.

The Guild serves its approximately 20,500 members through a network of over 300 chapters which are grouped into thirteen geographical regions. Find them on the Web at <http://www.egausa.org>

THE EMBROIDERERS' GUILD
 OF AMERICA, INC.



CHANGE SERVICE REQUESTED

E-Mail: NeedleArtsToledo@aol.com

Susan Pellitteri, Editor
 703 Butterfield Dr
 Toledo, OH 43615

Needle Arts Guild
 of Toledo Newsletter

